

# The Contemporary Trumpet

Contemporary Techniques:

Tonguing/Articulation

Pitch

Timbre / Colours

Contrapuntal Effects

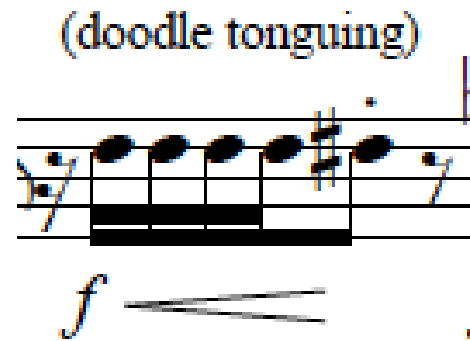
# Contemporary Techniques

## 1. Tonguing/Articulation

- Single tonguing (ta, da)
- Multiple tonguing (ta ka, ka ta, ta ta ka, ka ka ta)

# Elia Koussa Upwards in time

- Doodle tonguing (doo-dle)



# Flutter tongue (Flz)

- Or growl
- Range
- Dynamik

## 2. Pitch

- Lip bends
  - Lip Glissandi (harmonic series)
- Glissandi with 1<sup>st</sup> and or 3<sup>rd</sup> Valve slides

# Pedal Tones

- Bass Clef
- Allow time for pitching
  - Not virtuosic

### 3. Timbre / Colours

#### Mutes

- Straight mute
- Cup Mute
- Plunger mute
- Wa-Wa mute
- Harmon mute
- Practise / Silent mute

# Overtone

Wa-Wa / Plunger mutes

+ / o

+ → o

O → +

~



# Stockhausen

Ⓜ = *wawa mute* (with central tube).

For the *wawa mute*, the different degrees of opening are notated using the **phonetic alphabet**:

$\begin{bmatrix} [a] \\ [a] \\ [ɔ] \\ [o] \\ [u] \\ [u] \end{bmatrix}$  = completely open  
↓  
= completely closed by hand,

$[u—a]$ ,  $[ɔ—o]$  etc. = continuous transition,

$[a \ u \ o]$  etc. = sudden change.

# Vibrato

- Lip
- Jaw
- Diaphragm / air

# Air noises

- Just air
- Tongue Stops / Rams  
with / without pitch
  - Plosive attacks

## **IMPORTANT:**

- 7 Fingerings / Harmonic Series
- Air sounds sound a half-step higher

# Lisa Lim: Buwayak (Invisibility)

Handwritten musical notation for a section labeled "tongue ram ♀". The notation consists of two staves. The upper staff features a treble clef and a series of horizontal lines representing a melodic contour. Above the staff, there are two bracketed groups of three notes, each labeled with a "3". The lower staff contains a bass clef and a series of notes with stems pointing downwards. Below the lower staff, there are several vertical lines with "x" marks, and a dynamic marking "mp" with an accent ">".

Handwritten musical notation for a section labeled "air noise". The notation consists of two staves. The upper staff features a treble clef and a series of horizontal lines representing a melodic contour. Above the staff, there are two bracketed groups of three notes, each labeled with "3". The lower staff contains a bass clef and a series of notes with stems pointing downwards. Below the lower staff, there are several vertical lines with "x" marks, and a dynamic marking "mp".

# Shakes and Trills

- Shake
- Trills
- Tremolos

# Elia Koussa: Upwards in time

- Half-valve

(half small glissando  
valve) upwards



# 4. Contrapuntal Effects

## Split-tones

- Multiphonic effect between neighbouring overtones
  - see You Tube Video!

# Lisa Lim: Buwayak (Invisibility)

Handwritten musical score for Lisa Lim's piece "Buwayak (Invisibility)". The score is written on a single staff with various annotations and performance instructions.

**Annotations:**

- split tone**: Written vertically on the left side of the staff.
- VII**: Roman numeral indicating a seventh fret or position, with an arrow pointing to the right.
- I**: Roman numeral indicating a first fret or position, with a wavy line above it and an arrow pointing to the right.
- 3**: A bracketed number indicating a triplet.
- mf**: *mezzo-forte* dynamic marking.
- mp**: *mezzo-piano* dynamic marking.
- pp**: *pianissimo* dynamic marking.

**Performance Instructions:**

- Arrows pointing to the right indicate the direction of movement or breath.
- A wavy line above the first fret position indicates a tremolo or vibrato effect.
- Triplet markings (brackets with '3') are placed over specific notes.
- A crescendo hairpin is shown below the staff, starting from *pp* and ending at *mf*.

The musical notation includes notes with stems, beams, and slurs, indicating complex rhythmic and melodic structures.



# Singing / Humming- and-playing

- Gender
- Falsetto
- Glissandi
- Jazz 'growl'

# Elia Koussa: Upwards in time



# Pedal Multiphonic

- 'cello C

# SUMMARY

- Mechanics of the instrument
  - Stamina
  - Breath
- Simultaneous use of techniques- (NO!)
  - Know your players
  - Realism / Context